



How Parents can Play a Supportive Role

BRINGING OUT THE BEST IN OUR CHILDREN, TOGETHER

Every Parent A Supportive Partner



A large orange circle on the left side of the slide, partially cut off by the edge.

PARENTS as
PARTNERS-
IN-
EDUCATION

“Parents are a child’s first teachers. Parents are our most important partners. Teachers cannot be surrogate parents. I hope parents value teachers as their partners too.”

Minister Heng Swee Keat

A decorative yellow dashed line in the bottom right corner, consisting of several curved segments.

Forging a strong School-Home Partnership

P6 Students have been told to do target-setting at the beginning of January. They will be introduced to the importance of having **arrit** in Term 2



Why should you care about GRIT?

GRIT

INTELLIGENCE OR NATURAL ABILITY IS *NOT* AS POWERFUL AS GRIT

WITH GRIT, YOU CAN DEVELOP YOUR ABILITY
GET STRONGER
BETTER
AT SOMETHING
IF YOU WORK
LONG AND HARD
AT IT

Work towards a goal

Over

Stick to achieving the goal

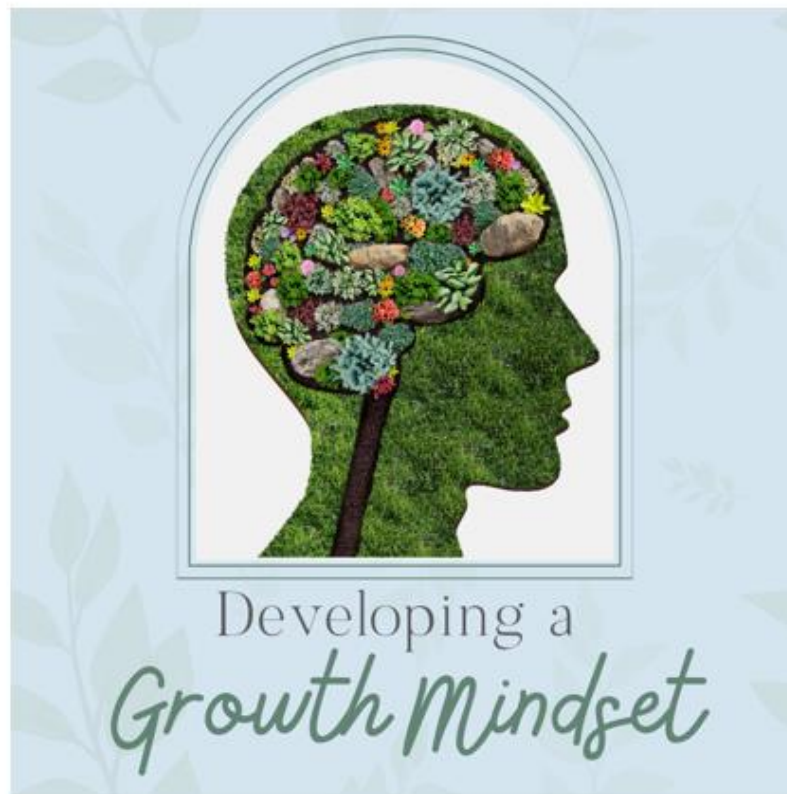


Develop Growth

- We
self
eve
kno
self

I Am A Self Leader

Log in to SLS for I Am A Self Leader lesson (T1W8)



E
S

h my



LONG AS
TRYING

RAIN BY
THINGS

ILL KEEP
I GET IT

NEEDS
EFFORT

IT YET.
WILL BE
GREAT



Daily Dose of Positive Education (PosEd)

Even though it wasn't the outcome I hoped for, I am pleased that I have learned a lot about myself.

Student's response

I aim to better myself...

I can use what I have learnt about myself to my advantage ...

Positive Self-Talk

Forging a strong School-Home Partnership



Common Challenges faced by P6 students

Managing expectations from parents and self

Time and Device Management

Peer Relationships

Physiological changes / Emotional resilience

How can you support your child?

1. Environment

Supportive Environment
& Positive Engagement

- Work together to encourage and support your child
- Open communication – regular feedback about progress
- Goal setting
- Clear expectations
- Routines & Structures
- Affirm your child's effort

2. Self-Directedness

Self-management &
ownership

- Completing & handing in work assignments
- Punctuality & regular attendance
- Organisational skills e.g. filing of worksheets

How can you support your child?

- **Attendance**

- Attend all lessons (including R3, Starlite, CARE, Holiday Classes)
- If genuinely unwell (e.g. with flu-like symptoms), see a doctor and obtain an MC (refrain from taking self-medication/home remedies)

- **Punctuality**

- Be punctual for all lessons
- From Term 2 onwards, being late will mean missing at least part of R3 programme
- We are monitoring late-coming cases, and if necessary, will work with parents to identify the root cause of chronic late-coming

What can you do as a parent?

1. SUPERVISE

Look out for signs of distress, and monitor your child's progress.

Noticed any of the following signs that is out of the norm for your child?

- Struggles to pay attention in studies or activities
- Tiredness
- Rebellious streak
- Excuses to miss school/class
- Stays away from others
- Sulking

It may be an indication of too much stress.



2. PROVIDE

Know your child's needs and be present.

Be willing to listen and communicate frequently in an open and supportive manner.

Give them your attention.



The **ZONES** of Regulation™



Toolbox

Blue Zone Toolbox



exercise



think happy thoughts



hugs



rest



listening to music



get a drink

Primary 6 Check-ins



Mental Check-In

- **At Primary 6, teachers do a weekly check-in with the students.**
- **Check-in is done every Monday or after a long holiday break**
- **Students indicate how they feel using post-it notes**
 1. **Take a post-it paper**
 2. **Write name/ number at the back of the post-it**
 3. **Paste it on the poster which relates to how you are feeling**

Confidentiality:

Checking in at home

Zones of Regulation

Checking in with your child

The PGVP Parent's Guide contains information and step by step instructions on how to facilitate and provide a conducive environment for the check in.

Let's start by asking how their day was and then encourage them to describe their feelings.

What can you do as a parent?

1. SUPERVISE

Look out for signs of distress, and monitor your child's progress.

Noticed any of the following signs that is out of the norm for your child?

- Struggles to pay attention in studies or activities
- Tiredness
- Rebellious streak
- Excuses to miss school/class
- Stays away from others
- Sulking

It may be an indication of too much stress.



2. PROVIDE

Know your child's needs and be present.

Be willing to listen and communicate frequently in an open and supportive manner.

Give them your attention.



What can you do as a parent?

3. ROLE MODEL

Role model resilient behaviour and positive mindsets in everyday situations.

Share with your child some of the challenges and setbacks you've faced, and how you managed and maintained positivity.



4. REASSURE

Encourage your child regularly.

Provide positive feedback and cheer your child on for every effort.





5 Learning Dispositions



Learner Agency Self-directedness

JOY OF LEARNING

Students who show joy of learning are motivated to learn and do their best. They derive satisfaction from learning new skills or discovering new ideas. They are also enthusiastic and show great interest in learning new things.

Students who are confident and self-directed learn easily when the problem is difficult and are not easily discouraged. They will even rise to the occasion when faced with setbacks.

Students who are curious and self-directed try to try out ideas or solutions offered by peers, willing to explore possibilities and consider other viewpoints and approach challenges in creative ways.

Students who are curious and self-directed have a natural interest in the world they live in. Students who are curious are eager to ask questions to develop deeper understanding and explore and learn about the things around them.

COLLABORATION

Collaborative learners are students who can cooperate well with others in a group learning setting, respect ideas shared by peers and value contribution of others. They work well as a team and learn from one another.

Direct School Admission for Secondary Schools (DSA-Sec)

DSA-Sec allows P6 students to apply to some secondary schools before taking the Primary School Leaving Examination (PSLE).

Direct School Admission (DSA) Route – Talks by YH and CCA teachers to P6 Students

- For students with talents and achievements beyond those that can be demonstrated at PSLE
- To seek admission to schools that can develop their talents (academic and non-academic) further ***even before taking PSLE***
 - However, though final PSLE score doesn't need to match the Cut-Off Point of the school, it needs to satisfy the minimum score for the Posting Group of the respective schools

Direct School Admission (DSA) – Areas of Strengths

- Sports and games
- Visual, literary and performing arts
- Debate and public speaking
- Science, mathematics and engineering
- Languages and humanities
- Uniformed groups
- Leadership



Direct School Admission for Secondary Schools (DSA-Sec)



Talent

Commitment

Passion

Is DSA-Sec an appropriate pathway for your child?

Carefully consider

- your child's strengths and interests, and
- the school's programmes and their ability to develop specific talent.

SCHOOL CHOICE JOURNEY

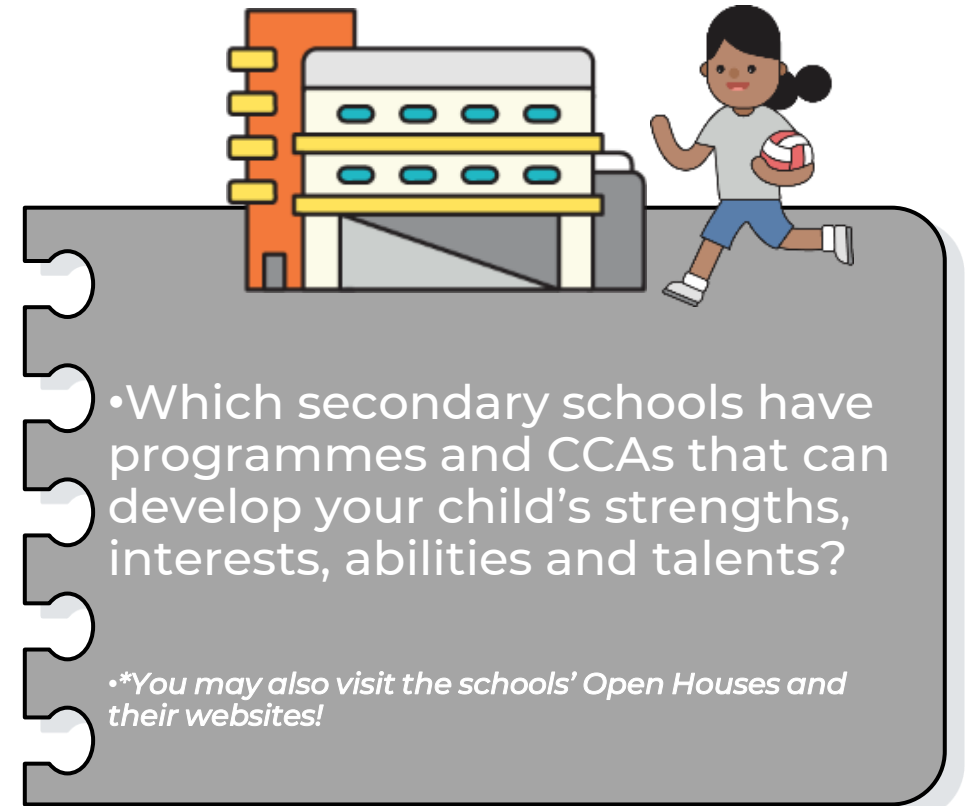
- The PSLE Score ranges are a **useful starting point** for parents and students to consider secondary schools.
- Use this information, together with other **important factors** such as the secondary schools' distinctive programmes, CCAs, ethos and cultures, to shortlist schools that would best fit the educational needs of the student.



WHICH SCHOOLS SHOULD MY CHILD SHORTLIST?



Want to know more about yourself?
Embark on a journey in **Career Quest** on
the [MySkillsFuture Student Portal](#)
[\(Primary\)](#) now!



Want to learn more about different
schools? Explore the **Education Guide** on
the [MySkillsFuture Student Portal](#)
[\(Primary\)](#) now!

IMPORTANT FACTORS TO CONSIDER WHEN CHOOSING SECONDARY SCHOOLS

01 SCHOOL CULTURE



What is the school's culture and ethos?

02

LEARNING ENVIRONMENT



How do I feel about the school based on what I saw at the Open House?

03

PROGRAMMES



Does the school have programmes I would enjoy?

04 CCAs



Are there CCAs that interest me and can nurture my strengths, abilities and talents?

05 SUBJECTS

What subjects are offered in the school?



06

LOCATION



How long will it take for me to travel to school and back home?

TIPS FOR PARENTS!

Be open and flexible when discussing your child's preferences, needs and choices.

Manage your own expectations and do not project these expectations onto your child.



Have regular conversations with your child to understand more about his/her strengths, interests, abilities, talents and aspirations.

Affirm your child and offer support when he/she shares his/her plans with you.

ENTERING SCHOOLS THROUGH DSA-SEC

- There is no change to the application and selection process with the shift to Full SBB.
- If your child has specific talents and strengths beyond the PSLE (e.g. areas such as sports, performing arts and leadership), consider the **Direct School Admission-Secondary (DSA-Sec)** as an alternative admission pathway to access secondary schools that have talent development programmes in these areas.



**Before
MAY**

**MAY to
JUN**

**JUN to
SEP**

**late
OCT**

**Nov
PSLE
results**

Explore schools and their talent areas, and shortlist suitable schools

Apply for DSA

Attend selection trials, interviews and auditions

Selection of preferred schools

Receive DSA offers if successful

ENTERING SCHOOLS THROUGH DSA-SEC

- Apply via the DSA-Sec Portal with your Singpass Two-Factor Authentication (Singpass 2FA).
- Indicate up to 3 choices and 3 talent areas. You may indicate up to 2 talent areas for the same school. If you want to apply for 2 talent areas at the same school, you must indicate both as separate choices.

<https://www.moe.gov.sg/secondary/dsa/application>

S1 Posting

- PSLE Students (non-DSA) and unsuccessful DSA candidates will participate in the S1 posting exercise to opt for secondary schools
- Successful candidates will participate in the S1 posting exercise to opt for foreign languages/elective programmes/course options if eligible

ENTERING SCHOOLS THROUGH DSA-SEC

In 2024, 20 students from PGVP were successful in DSA application:

- Zhonghua Secondary School
- Tanjong Katong Secondary School
- School Of Science And Technology, Singapore
- School Of The Arts, Singapore
- Cedar Girls' Secondary School - Integrated Programme
- Tanjong Katong Girls' School
- Compassvale Secondary School
- St. Andrew's Secondary School
- Methodist Girls' School (Secondary)
- Pei Hwa Secondary School
- North Vista Secondary School
- Damai Secondary School

Useful resources

Quick tips on shortlisting secondary schools

A SECONDARY SCHOOL THAT'S SUITABLE FOR YOUR CHILD
Help them match the school to their strengths and interests.

ASK:
What are their strengths, interests, and abilities?
- What kind of courses, programmes and opportunities will develop these?
- Is the pace of learning suitable for them?

CONSIDER:
- School Culture
- Courses
- Programmes, Subjects and CCAs Offered
- Location and Transport
- If your child has Special Educational Needs
Select schools with specialised facilities or resources.

SUBMIT:
- School Options
Go that your child is more likely to get into a school of choice.
- Schools with Different Cut-Off Points
Consider all local S-B schools where your child's PSLE Score is better than the school's Cut-Off Point.
REFER TO:
MOE's SchoolFinder
Check out schools based on subjects offered, Co-Curricular Activities, location and contact information.

YOUR RANK OF SCHOOL CHOICES
The higher you rank your choices, the better your chance of getting into that school.
Do note that schools' PSLE Score ranges can vary from year to year, since they depend on each school's performance and intake patterns.

Ministry of Education SINGAPORE

Tools to use to explore secondary schools

SCHOOL FINDER

*My*SKILLS*future*



How-to-Guides to equip parents on how to use the tools

How to Use SchoolFinder
Ministry of Education SINGAPORE

<https://go.gov.sg/school-finder>



Useful resources

Transition Materials



Resilience Boosters



FIND OUT MORE ON THE PSLE-FSBB MICROSITE



<https://go.gov.sg/pslefsbb>



EXPLORE YOUR FULL SBB PATH



<https://go.gov.sg/my-fsbb-path>

OTHER RESOURCES

SchoolFinder Tool

SCHOOL FINDER



<https://go.gov.sg/secschoolfinder>

“Welcome to Secondary School” video



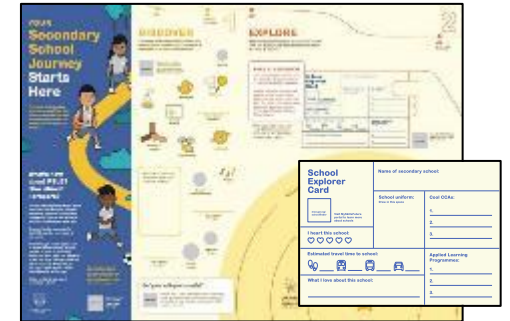
<https://go.gov.sg/welcome-to-secondary-school>

Secondary School Education Booklet



<https://go.gov.sg/psle-sec-sch-brochure>

Student Journey Map and School Explorer Card



<https://go.gov.sg/psle-student-journey>

OTHER RESOURCES

ECG Tips For Parents



<https://go.gov.sg/tips-for-parents>

MySkillsFuture Student Portal (Primary)



<https://go.gov.sg/mysfpri>

ECG What's Next



<https://go.gov.sg/whats-next-psle>

Be a P.S.L.E. parent

P – PROACTIVE

S – SUPPORTIVE

L – LOVING

E – EMPOWERING

"Every child deserves

A CHAMPION

an adult who will never give up on them
who understands the power of connection
and **INSISTS** that they
become the best
they can possibly be."

-Rita Pierson

-inthelandofteaching-

<https://www.moe.gov.sg/parentkit>



THANK YOU!

